



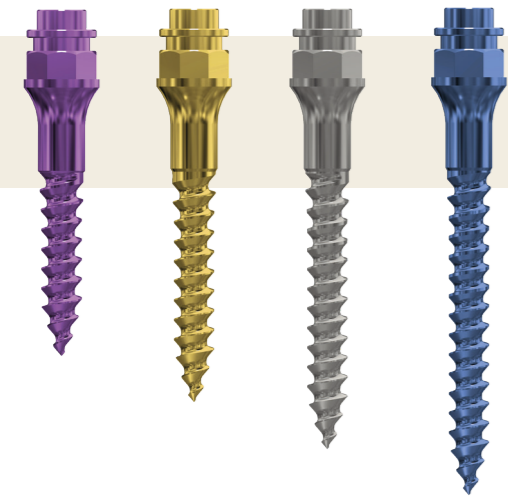
Pin

- » Head in bracket design“
- » With cross slot .022" x .025"
- » For coupling with wire elements (up to .019" x .025")
- » Diameter 1.7 mm
- » Available in lengths of 6, 8, 10 and 12 mm

Pal



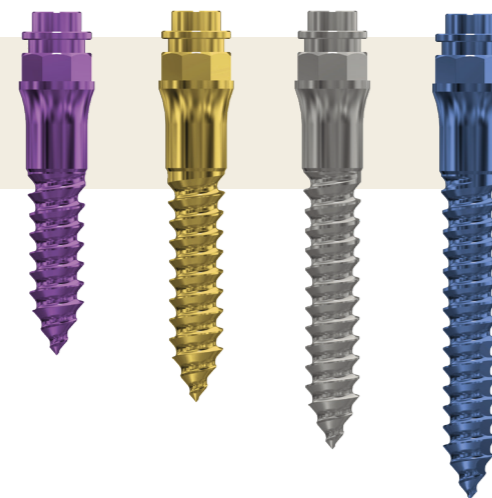
- » Head with internal thread
- » For fitting of appliances with OrthoEasy® Pal abutments
- » Diameter 1.7 mm
- » Available in lengths of 8, 10, 12 and 14 mm



Pal Long Neck 1.7

- » With long transgingival segment
- » Head with internal thread
- » For fitting of appliances with OrthoEasy® Pal abutments
- » Diameter 1.7 mm
- » Available in lengths of 8, 10, 12 and 14 mm

Pal Long Neck 2.3



- » With long transgingival segment
- » Head with internal thread
- » For fitting of appliances with OrthoEasy® Pal abutments
- » Diameter 2.3 mm
- » Available in lengths of 8, 10, 12 and 14 mm

All ordering information and products relating to OrthoEasy® can be found here:



All technical information about OrthoEasy® can be found here in the PocketGuide:



Dr. Björn Ludwig is the inventor of the OrthoEasy System. The system is based on his extensive studies, clinical observations and publications over the past 20 years. In 2022, his colleague, friend and fellow orthodontist Dr. Giorgio Iodice made suggestions for expanding and further developing the system, which have now been implemented.

FORESTADENT
Bernhard Förster GmbH
Westliche Karl-Friedrich-Str. 151
75172 Pforzheim (Germany)
Phone: +49 (0) 7231 459-0
Fax: +49 (0) 7231 459-102
www.forestadent.com
info@forestadent.com

FORESTADENT
GERMAN PRECISION IN ORTHODONTICS

ORTHOeasy®



The 16 stars
of skeletal
anchorage

www.forestadent.com

FORESTADENT
GERMAN PRECISION IN ORTHODONTICS

1) Interradicular – OrthoEasy® Pin

- » Location: Between the roots of the teeth
- » Typical lengths: 6–8 mm
- » Diameter: 1.7 mm
- » Typical thickness of the soft tissue: 2–3 mm
- » Frequently used for anchoring tooth movements such as distalization, mesialization or molar uprighting. Also possible transalveolar

2) Mandibular Buccal Shelf – OrthoEasy® Pal + Long Neck

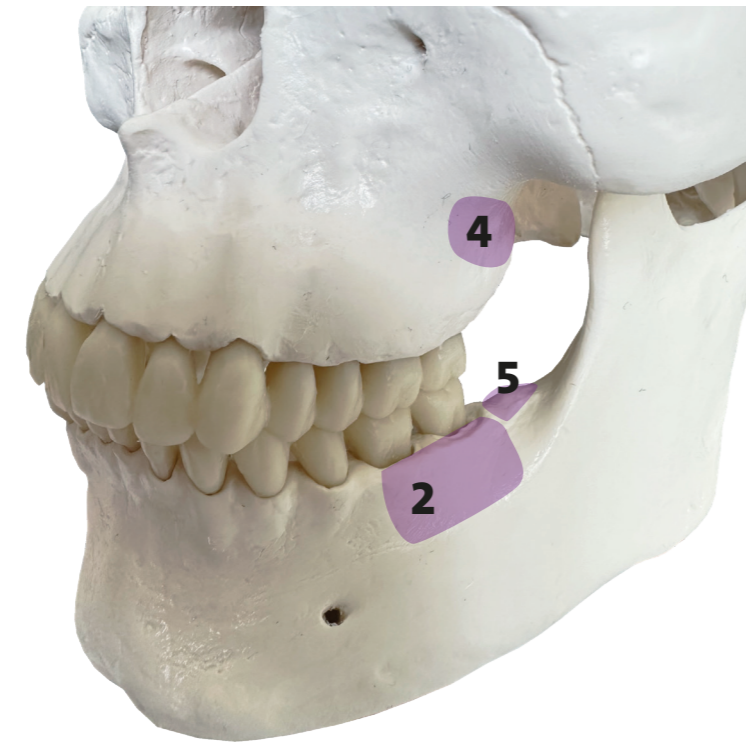
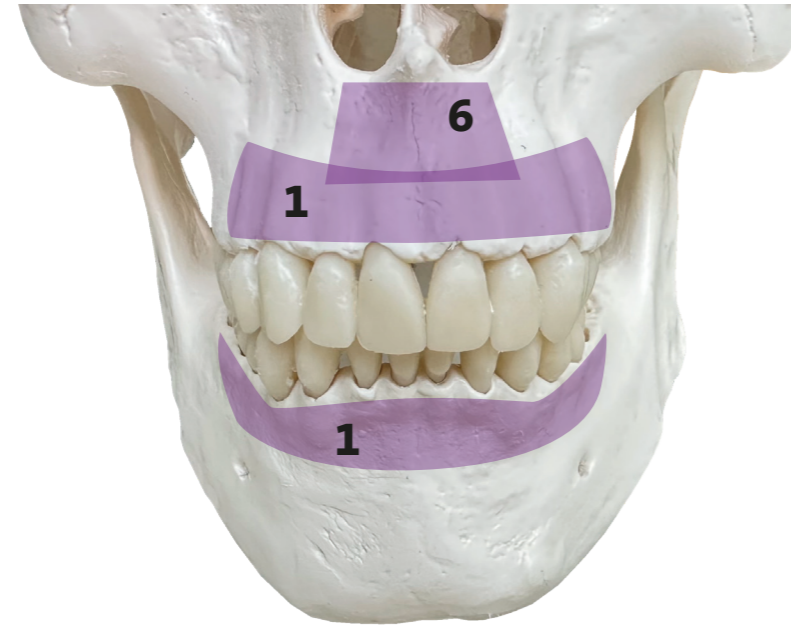
- » Location: On the buccal side of the lower jaw, in the area of the molars
- » Typical lengths: 10–14 mm
- » Diameter: 1.7 or 2.3 mm
- » Typical thickness of the soft tissue: 2–5 mm
- » Used for difficult movements, such as the distalization of the entire lower arch or the intrusion of molars

3) Zygoma – OrthoEasy® Pal + Long Neck

- » Location: In the area of the zygomatic bone, above the upper jaw
- » Typical lengths: 12–14 mm
- » Diameter: 1.7 or 2.3 mm
- » Typical thickness of the soft tissue: 2–3 mm
- » For tooth movements or in combination with orthognathic surgery, which often requires particularly strong anchorage

4) Infrazygomatic region – OrthoEasy® Pal + Long Neck

- » Location: Below the zygoma, on the buccal side of the maxilla
- » Typical lengths: 10–12 mm
- » Diameter: 1.7 or 2.3 mm
- » Typical thickness of the soft tissue: 2–4 mm
- » Frequently used to support the correction of malocclusions and bite position problems, as well as in the distalization of upper molars



5) Retromolar region – OrthoEasy® Pal + Long Neck

- » Location: In the area behind the third molars of the lower jaw
- » Typical lengths: 10–12 mm
- » Diameter: 1.7 or 2.3 mm
- » Typical thickness of the soft tissue: 3–5 mm
- » Can be used to distalize the lower molars or to create space in the dental arch

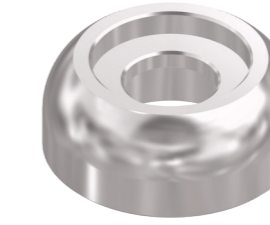
6) Paranasal region – OrthoEasy® Pin

- » Location: Above the upper incisors near the bridge of the nose
- » Typical lengths: 8–10 mm
- » Diameter: 1.7 mm
- » Typical thickness of the soft tissue: 2–3 mm
- » Particularly useful for correcting protruded incisors in the upper jaw or asymmetrical movements. Provides firm anchorage for targeted tooth movements

7) Palatal – OrthoEasy® Pal + Long Neck

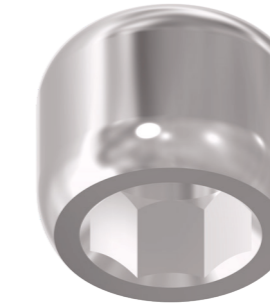
- » Location: In the hard palate, behind the third palatal ruga
- » Typical lengths: 8–10 mm
- » Diameter: 1.7 or 2.3 mm
- » Typical thickness of the soft tissue: 3–4 mm
- » For anchorage of palatal expanders, molar distalization or asymmetrical tooth movements. Stable anchorage without affecting soft tissue or dental structures

OrthoEasy® Pal Abutments



1299-1004

- » Low profile without rotation lock
- » To weld on appliances



1299-1014

- » High profile with rotation lock
- » To weld on appliances



1299-1015

- » High profile with rotation lock
- » For coupling with tension elements such as springs or chains
- » With .022" x.028" slot



1299-1016

- » High profile without rotation lock
- » Round slot 1.5 mm
- » For easy connection of palatal expanders, Frog II or sliders



1299-1018

- » High profile without rotation lock
- » To weld on appliances



1299-1019

- » High profile without rotation lock – Easy Mount
- » Auxiliary abutment for easier insertion of fully bone-supported appliances