

fasKIDS

The new **splint system** for the individual growth control of your little patients' jaws



 FORESTADENT®

 **fas**
Aligner System



Treatment with **FAS KIDS** splints was specially developed for children between the ages of 5 and 12.

FAS KIDS makes it possible to intervene in the primary dentition, mixed dentition and newly formed permanent dentition before malocclusions even begin to develop.

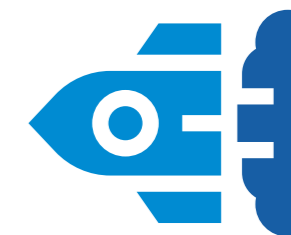
FAS KIDS **BRIEFLY** **EXPLAINED**

The objective of **FAS KIDS** is to maintain or restore the functional balance in the mouth of your young patients from an early age.

Many orthodontic problems can be avoided if early intervention is made before the malocclusion develops.



FAS KIDS **ADVANTAGES**



The **FAS KIDS** system offers you and your little patients a whole range of advantages:



Higher acceptance and compliance due to better wearing comfort compared to conventional removable appliances.



Reduced risk of caries due to regular replacement of the splints and easier oral hygiene.



Lower risk of pressure points and injuries in the oral cavity as well as tooth fractures.



Improved wearing times, as **FAS KIDS** splints are almost invisible and can therefore also be worn at school, during sports and when playing.



No impairment of speech.

FAS KIDS INDICATIONS

FAS KIDS is a splint therapy for the treatment of patients in primary dentition, mixed dentition or newly formed permanent dentition and was developed for the following indications:



Dentoalveolar expansion



Vertical control



Improvement of the overbite



Improvement of open bites



Control of habits



Advancement of the mandible



Guiding the eruption of permanent teeth



Prevention of malocclusions in the permanent dentition

FAS KIDS-FLEX (409K2000)

Individual splints for simple problems – **up to 10 pieces per jaw.**



Possibility to add **DIGITAL TRACKS*** at an additional cost.



Simple movements for 1-2 teeth, one molar or one incisor in crossbite.



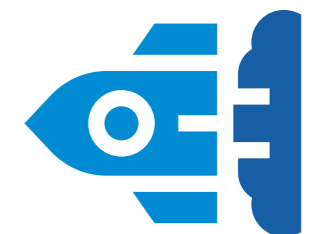
Indicated for active retention.



Enables the use of **SMART HOOKS***.



Can be used in conjunction with **SMART HOOKS*** for active retention of Class II and Class III teeth.



*You can find more information on this from page 10 onwards.

FAS KIDS-TARGET (409K2001)

K-TARGET is limited to 20 splints per arch, includes a **STOP and GO®** and second phase with an additional maximum of 5 splints per arch. Treatment is limited to 18 months after approval of the treatment plan.



Enables **DIGITAL TRACKS*** at the start of treatment (incorporated into the 0 splint for attachment placement).



Enables functional advancement of up to 2 mm.



Can be combined with **SMART HOOKS***.



Distalization of molars is unfortunately not possible.



Crowding of up to 4 mm.

*You can find more information on this from page 10 onwards.



Diastema in the anterior region of up to 2 mm.



Leveling of the incisal and gingival edges by up to 1 mm.



Expansions of up to 2 mm per quadrant.



Rotations of up to 20°.



Overbites of up to 2 mm.



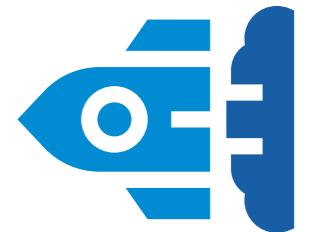
Open bites of up to 1 mm.



Midline corrections of up to 1 mm.



Treatment of crossbites of one posterior tooth or two anterior teeth.



FAS KIDS-PRO (409K2002)

K-PRO was developed to control the patient's jaw growth. With **K-PRO**, the treatment is divided into small steps. This allows the therapy to be adapted to the patient's development without losing control of the treatment.

K-PRO consists of 4 phases with up to 20 splints per phase and a **STOP and GO®**. Treatment is limited to 24 months after approval of the treatment plan.



Enables distalization of molars of up to 2 mm.



Enables **DIGITAL TRACKS*** at the start of treatment or after each **STOP and GO®** (incorporated into the 0 splints for attachment placement).



Enables mandibular advancement of up to 3 mm using **ELASTICS** (this must be divided into different phases for advancements over 3 mm).



Enables **OCCLUSAL BLOCKS*** (charged separately). Each set of splints with **OCCLUSAL BLOCKS** is sent twice. Prerequisite for the use of **OCCLUSAL BLOCKS** are existing milk molars or molars that have already completely erupted.



Use of **SMART HOOKS***.

*You can find more information on this from page 10 onwards.



Crowding of up to 6 mm.



Diastemas of up to 4 mm.



Leveling of the incisal and gingival edges by up to 2 mm.



Expansion of up to 3 mm per quadrant.



Rotations of up to 30°.



Overbites of up to 2 mm.



Open bites of up to 2 mm.



Midline corrections of up to 2 mm.



OPTIONAL AUXILIARIES SMART HOOKS

SMART HOOKS are fixation elements that are fitted to the splints for attaching **ELASTICS**.



This makes them more comfortable for patients to wear and makes oral hygiene easier.



Elastics are easy to remove and can be used more easily with splints in general.



Better adjustment and transmission of biomechanical forces.



Force transmission to the teeth over the entire splint.



OPTIONAL AUXILIARIES DIGITAL TRACKS (409K2004)

DIGITAL TRACKS are bite stops that are digitally designed on the basis of a construction bite with the aim of changing the orientation of the bite position.

This allows patients to achieve a sliding of the lower jaw in the sagittal plane and therefore a **Class I** occlusion when they bite together.

The aim of the treatment is to obtain inclined planes in both the upper and lower jaw.

There are three types of **DIGITAL TRACKS**:

1. Class II
2. Class III
3. For control of the overbite

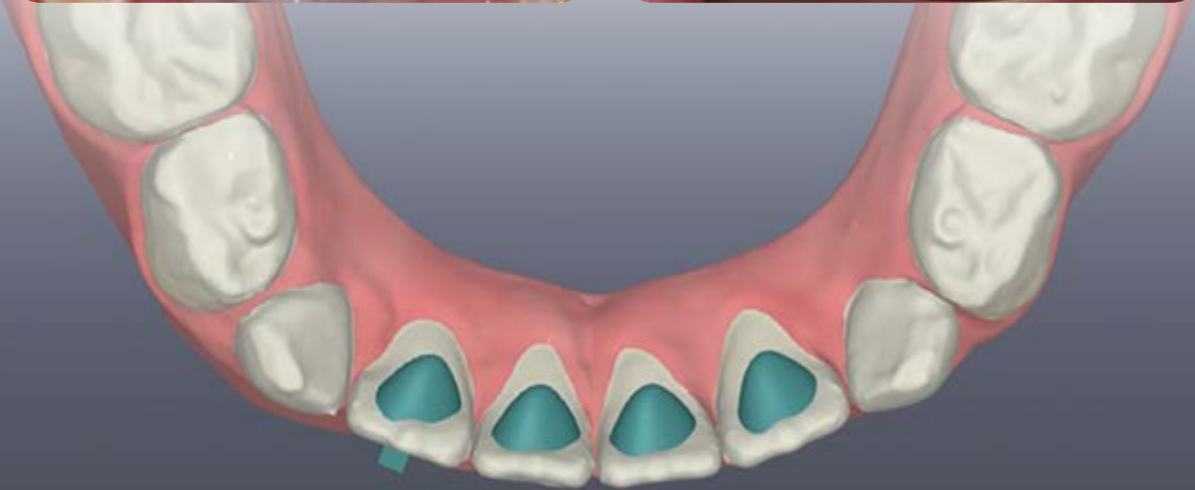
DIGITAL TRACKS can also be ordered as a stand-alone product (already included in the **K-Target** and **K-Pro** packages).

For production, we need the models in a construction bite with the molars and canines set correctly. With **DIGITAL TRACKS**, an advancement of up to 2 mm can be achieved.



OPTIONAL AUXILIARIES LINGUAL STOPS

Lingually positioned **SPIKES** used to control habits in relation to tongue positioning.



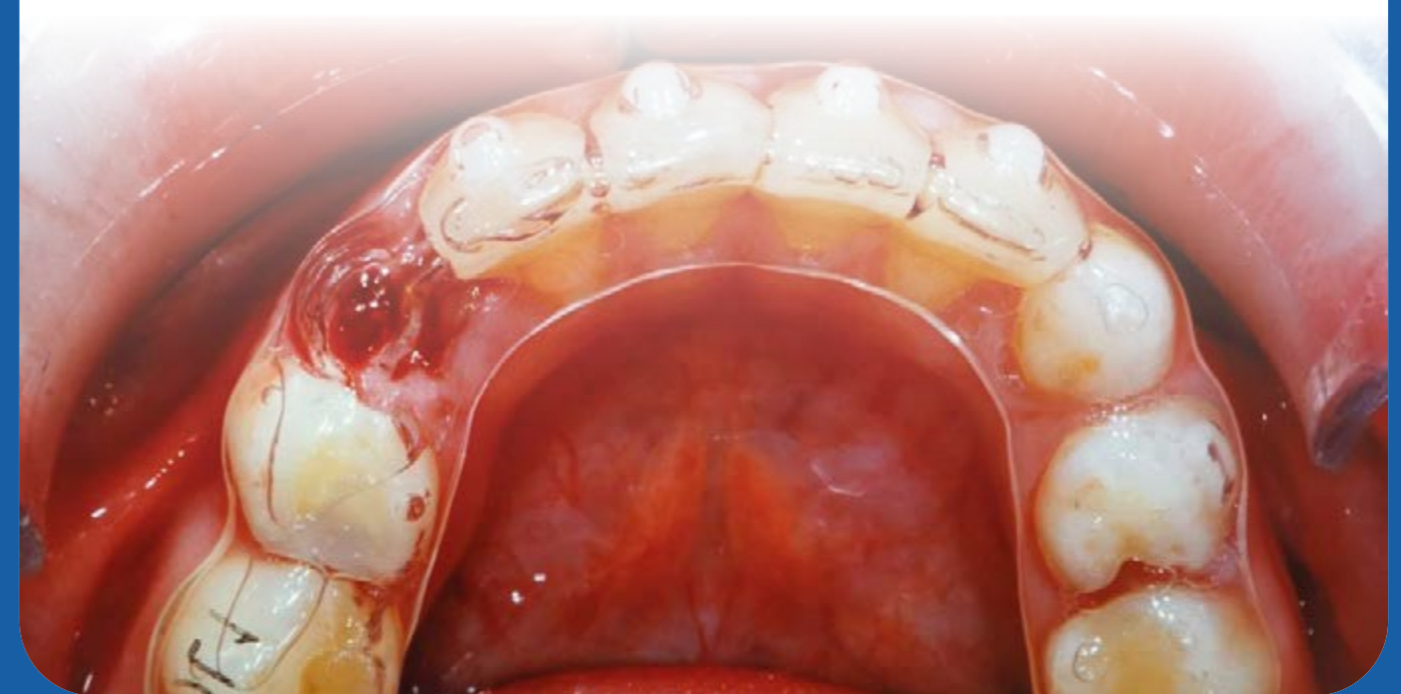
OPTIONAL AUXILIARIES SPLINTS FOR TOOTH ERUPTION

ACTIVE SPLINT

It guides the eruption of a tooth to a recess, which is planned into the splint based on the intended position.

PASSIVE SPLINT

It keeps the gap open until the tooth is fully erupted.



OPTIONAL AUXILIARIES

OCCLUSAL BLOCKS (409K2003)

OCCLUSAL BLOCKS are used to advance the mandible. They are integrated into the splints, follow the principles of functional orthodontics and use the occlusal forces to resolve the malocclusion.

OCCLUSAL BLOCKS form a bimaxillary appliance consisting of a maxillary and

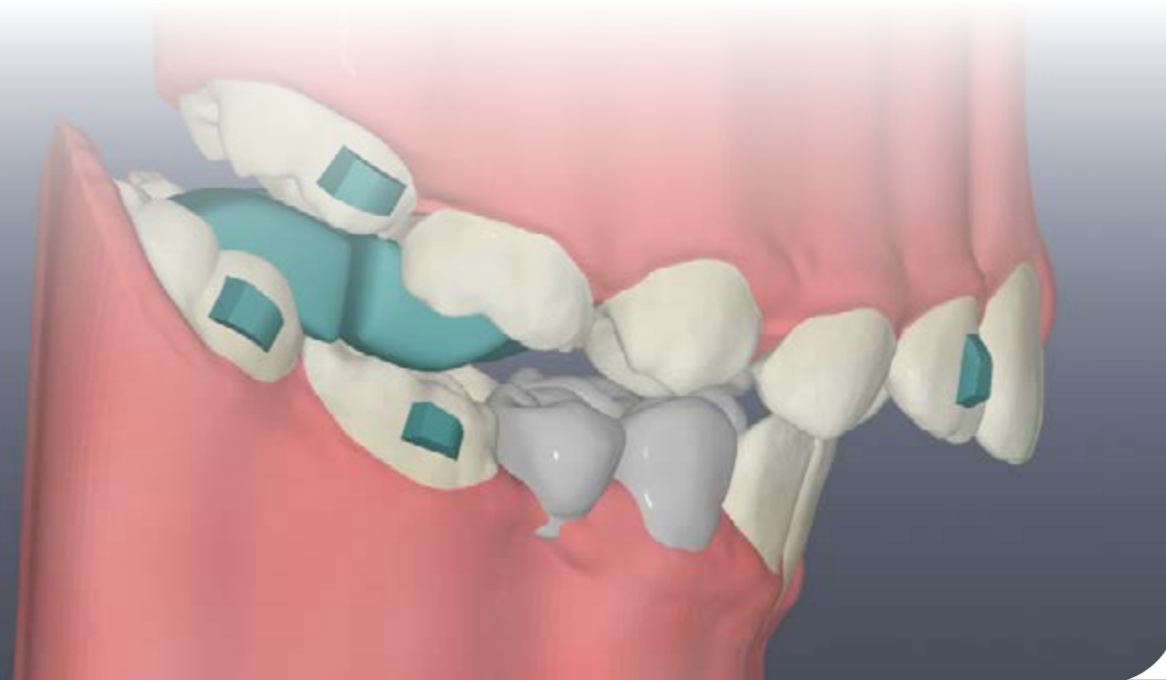
mandibular block and provide planes for bite elevation at an angle of 70°. This results in a forward displacement of the lower jaw into a Class I occlusion.

The two-part appliance ensures normal function and pronunciation.

OCCLUSAL BLOCKS therefore offer the highest wearing comfort and the lowest visibility of all comparable appliances in functional orthodontics.

This appliance is ideal for the treatment of cases in Angle Classes II.1 and II.2.

OCCLUSAL BLOCKS can only be ordered as part of the **K-PRO** package and contain two sets of splints for each treatment level.



Info Nr. 237/05.2024

FORESTADENT

Bernhard Förster GmbH

Westl. Karl-Friedrich-Str. 151
75172 Pforzheim (Germany)

Phone: +49 (0) 7231 459-0

Fax: +49 (0) 7231 459-102

Email: info@forestadent.com

www.fasaligners.com

