



Currently the fastest 3D printer in the world



# Most important features



**Uniz NBEE**

Its printing speed is currently unbeatable – it prints 6 aligner models in approx. 5 minutes\*. Its patented liquid cooling system ensures a stable printing process with very high accuracy.

The patented Low Force Stereo Peel technology of the resin tank in combination with a collimated light source with high power (16 mW/cm<sup>2</sup>, 95 % uniformity) and the active monitoring of the reaction temperature create ideal conditions for fast and high-quality results.

\* Depending on height of model



**Uniz SLASH 2 PLUS**

SLASH 2 PLUS is a further developed model of the UNIZ desktop printer and also impresses with its speed. In the laboratory, values of up to 250 mm/hour are achieved. In other words, it prints 6 aligner models in about 18 minutes\*.

Like the NBEE, the SLASH 2 PLUS also features the patented liquid cooling system, which ensures a stable and reliable printing process. Thanks to an even more powerful LED light source (12000 mW/cm<sup>2</sup>) compared to the previous model, almost all dental resins available on the market, e.g. for direct print aligners, dental models, surgical guides and also IDB trays and nightguards, can now be processed on the SLASH 2 PLUS.

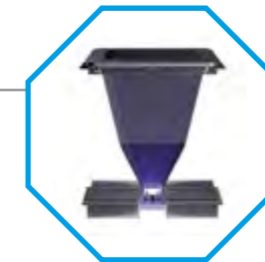
\* Depending on height of model



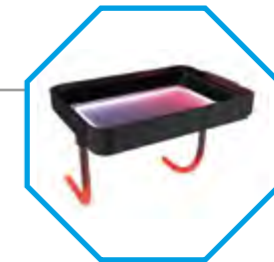
**High Efficiency Liquid Cooling**  
Maintain system temperature below 40 °C



**Micro-Stereo Composite**  
Patent low-force stereo peel technology



**High-power collimated light source**  
16 mW/cm<sup>2</sup> high power, 95 % uniformity



**Resin Temperature Control System**  
Maintain optimal resin temperature

# Technical data

|          |                                | NBEE   | SLASH 2 PLUS   |
|----------|--------------------------------|--|--|
| PRINTING | Printing Technology            | LCD Stereo Lithography   | LCD Stereo Litography  |
|          | Build volume                   | 192 x 120 x 180 mm   7.5 x 4.7 x 7.1"  | 192 x 120 x 200 mm   7.5 x 4.7 x 7.9"  |
|          | XY-resolution                  | 49.8 µm  | 49.8 µm  |
|          | Maximum accuracy*              | ± 10 µm  | ± 10 µm  |
|          | Layer thickness (Z-resolution) | 10 – 200 µm<br>(25, 50, 100 recommended)   | 10 – 200 µm<br>(25, 50, 100 recommended)   |
|          | Separation Mechanism           | Stereo-Polymer-Multi-Layer-Film-Peel   | Polymer-Film-Natural-Peel  |
|          | Support                        | Uniz smart support technology  | Uniz smart support technology  |
|          | Printing speed**               | 6 aligner models in ca. 5 minutes  | 6 aligner models in ca. 18 minutes   |
| HARDWARE | Dimensions / weight            | 380 x 380 x 1230 mm [LxWxH]<br>15 x 15 x 49"<br>60 kg   132 lb   | 350 x 400 x 530 mm [LxWxH]<br>14 x 16 x 21"<br>15 kg   33 lb   |
|          | Operating temperature          | 18 – 28 °C   64 – 82 °F  | 18 – 28 °C   64 – 82 °F  |
|          | Power requirements             | 110 V, 6A, 60 Hz   220 V, 3A, 50 Hz  | 100 – 240 V, 6A, 50/60 Hz  |
|          | Optical system                 | Collimated light source (4. Generation)  | Patented LED Array Light Engine  |
|          | Gehäuse                        | Cast Aluminum and CNC Sheet Metal  | Cast Aluminum and CNC, Injection Molding   |
|          | Connectivity                   | USB Flash drive, Wi-Fi, Ethernet   | USB Flash drive, Wi-Fi, Ethernet   |
|          | Casing                         | 7" Touch Screen  | 4.3" Touch Screen  |
| SOFTWARE | System requirements            | Windows 7 and up (64-bit only),<br>Mac OS X 11.4 and up (64-bit only),<br>16GB RAM, OpenGL 2.1,<br>Discrete Graphics | Windows 7 and up (64-bit only),<br>Mac OS X 10.7 and up (64-bit only),<br>16GB RAM, OpenGL 2.1,<br>Discrete Graphics |
|          | Sliceware features             | Advanced Model Repair<br>Ultra Large File Support (1 GB+)  | Advanced Model Repair<br>Ultra Large File Support (1 GB+)  |
|          | Compatible formats             | STL, OBJ, AMF, 3MF   | STL, OBJ, AMF, 3MF, ZPRJ   |

\* Data was obtained with aligner models specifically defined for testing purposes. Results with other models may vary.

\*\* Results with special speed testing models (other models may lead to different results).

# Dental Slicing Software



- Intelligent scan repair feature
- Smart automated support function
- High-speed Modell-Slicing and data export
- Customizable editing functions

# Integration & Partnership



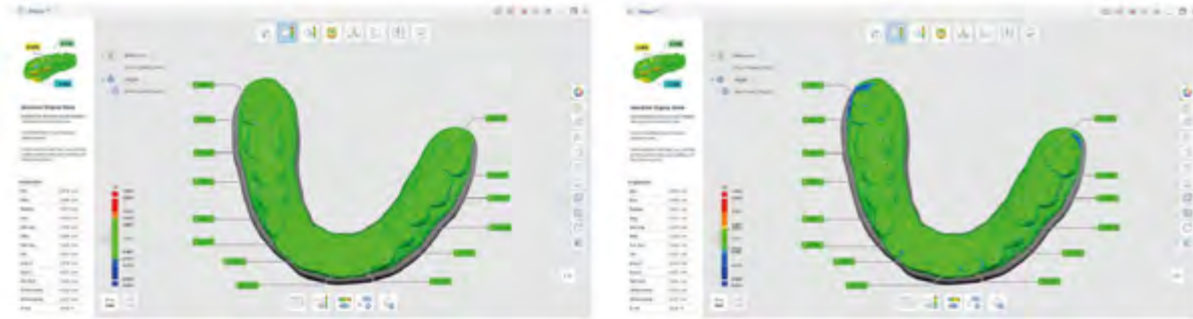
Seamless integration with leading providers of 3D-scanning and CAD/CAM solutions

3shape

MEDIT

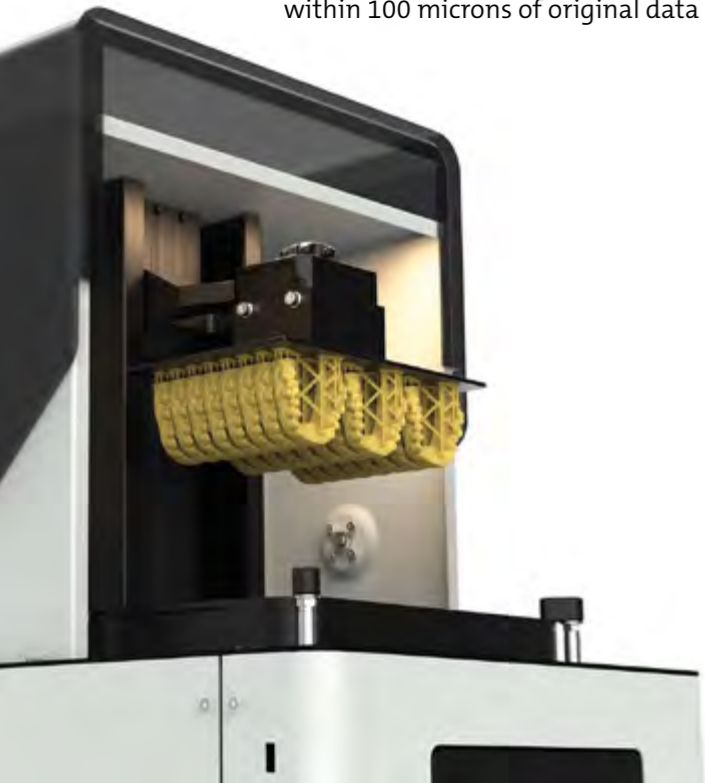
exocad

# High precision models printed with Uniz NBEE



99.6% of data points  
within 100 microns of original data

95.05% of data points  
within 50 microns of original data



Surface at 50 microns  
Z-resolution

# Ordering details

| Order No. | Content | Description   |
|-----------|---------|---|
| 999-4000  | 1       | <b>Uniz NBEE 3D-Printer</b><br>incl. resin tank, replacement for LCD module, protective foils for the projector screen, installation tools, 1 bottle of model resin, 220 V, 3A, 50 HZ                   |
| 999-4002  | 1       | <b>Uniz NBEE 3D-Printer</b><br>incl. resin tank, replacement for LCD module, protective foils for the projector screen, installation tools, 1 bottle of model resin, 110 V, 6A, 60 HZ (USA/Japan/LatAm) |
| 999-4001  | 1       | <b>Uniz NBEE Spare tank</b>   |
| 999-4010  | 1       | <b>Uniz SLASH 2 PLUS 3D-Printer</b><br>incl. resin tank, protective foils for the projector screen, installation material and tools, 1 bottle of model resin, 100–240 V, 6A, 50/60 HZ                   |
| 999-4011  | 1       | <b>Uniz SLASH 2 PLUS Spare tank</b>   |
| 999-4012  | 1       | <b>Uniz SLASH 2 PLUS Lid for resin tank</b>   |



**Hersteller:**

**Uniz Technology LLC**  
9400 Activity Rd Ste L  
San Diego, CA 92126, US

**Distributed by:**

**FORESTADENT**  
Bernhard Förster GmbH  
Westliche Karl-Friedrich-Straße 151  
75172 Pforzheim (Germany)  
Phone: +49 (0) 7231 459-0  
Fax: +49 (0) 7231 459-102  
[www.forestadent.com](http://www.forestadent.com)  
[info@forestadent.com](mailto:info@forestadent.com)

  
FORESTADENT®  
GERMAN PRECISION IN ORTHODONTICS